



Cut Knurling Tools **RF 2**

ZEUS Cut Knurling Tool No. 240-40/60



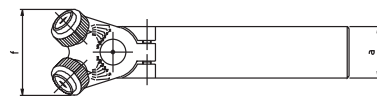
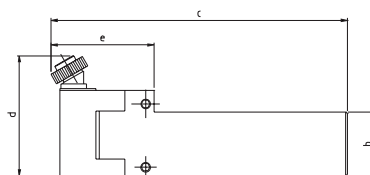
- Application:** Cut knurling (swarf removal), Feed knurling
For knurling on work piece according to DIN 82: RGE 30°; RGE 45°
- Knurling Wheels:** RGE 30° – 2 pieces AA
RGE 45° – 1 piece BL 15° / 1 piece BR 15°
- Type of Machine:**
- Lathe machines and auto lathes
 - Conventional
 - Centre height to be adjusted
- Features:**
- Scale for setting the work piece diameter
 - Fine adjustment for positioning the cut knurling head – for an even profile depth



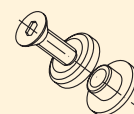
Knurling profile on work piece
DIN 82



RGE



No.	Working area ø mm	a mm	b mm	c mm	d mm	e mm	f mm	Knurling wheels size mm	Spare part set
240-40U321316	50 - 1000	40	60	291	125	101	84	32 x 13 x 16	21BHR0508
240-60U421316	50 - 3000	60	75	348	143	118	100	42 x 13 x 16	21BHR0508
Your individual tool measurements:									



Name: Roll
Material: Steel ST56
Knurling profile on work piece (DIN 82): RGE 1,6 (30°)
Application: Feed knurling, swarf removal
Speed rate m/min: 71
Feed rate mm/rev: 0,2
Machine: Böhringer V6
Tool: Knurling tool 240-40M321316
 Knurling wheel 2xAA 32x13x16 P1,6